

The MIURA

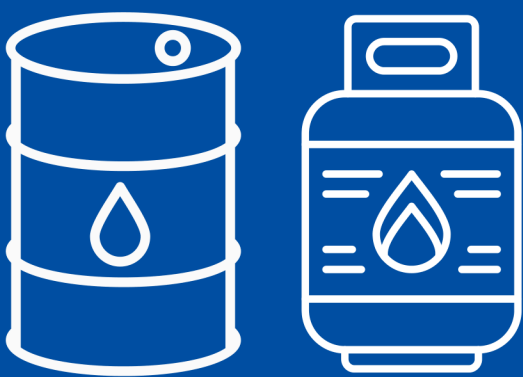
Advantage



for Healthcare Facilities



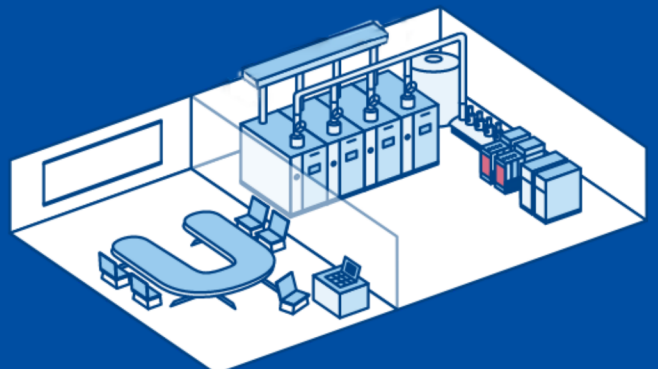
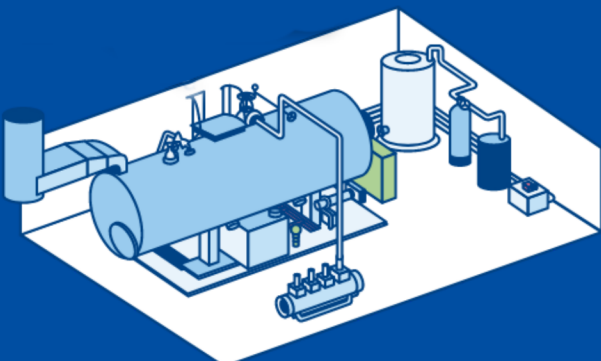
As the world leader in ultra-low NOx modular on-demand steam solutions, Miura modular boilers are reliable, safe, and highly adaptive to the fluctuating steam demands of hospitals and other medical facilities.



Dual Fuel

Miura's EX-Series is a Dual Fuel Steam Boiler that quickly and easily switches between #2 oil and natural gas/propane when needed. Satisfying the NFPA-110 Standard for Emergency and Standby Power Systems and provincial requirements for critical facilities such as hospitals.

Cost Saving Modular Design



Hospital construction is among the most expensive of any commercial building. That's where Miura's unique, compact, modular steam boiler design offer a real advantage over a much larger traditional boiler.

With Miura's smaller footprint, you can save up to 50% in floor space, this gives you design flexibility, reduced capital expenditure, construction costs and more options with existing spaces.

Supporting Seasonal Efficiency

Healthcare industries are often required to have redundant systems, such that if one fails, the other kicks in seamlessly. Miura's modular systems of multiple boilers are an ideal solution, maximizing efficiency for the unique seasonal load requirements of hospitals, while providing the 100% back-up capability (N+1).

